



10 Aylewyn Green

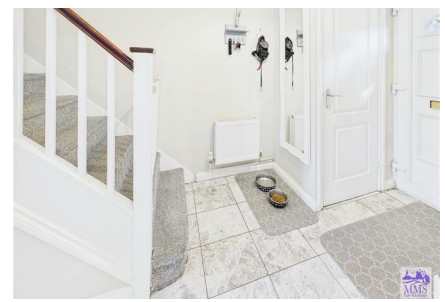
Kemsley ME10 2RS

Offers Around £250,000



Introducing this fantastic property in the charming area of Aylewyn Green, Kemsley, this delightful mid-terrace house presents an excellent opportunity for first-time buyers. Built in 1985, the property spans a comfortable amount of square footage and features two double bedrooms, making it perfect for small families or couples seeking extra space. Upon entering, via the hallway, you will find the the modern fitted kitchen, which is well-equipped, providing a functional space for culinary pursuits. Situated at the rear of the property, you are welcomed into a bright and inviting lounge, ideal for relaxation or entertaining guests. The contemporary bathroom ensures convenience and comfort and is situated on the first floor. The property also boasts a low-maintenance garden, allowing you to enjoy outdoor space without the burden of extensive upkeep. One of the standout features of this home is its location. Situated on a peaceful walkway, it overlooks beautiful greenery, offering a serene environment for daily living. Additionally, the property benefits from off-street parking for two vehicles, a valuable asset in today's busy world. Convenience is key, as this home is close to a variety of local amenities, ensuring that everything you need is within easy reach. With an Energy Performance Certificate (EPC) rating of D and a council tax band of B, this property is not only appealing but also practical.

In summary, this fantastic starter home in Aylewyn Green is a rare find, combining modern living with a tranquil setting. It is an ideal choice for those looking to make their first step onto the property ladder. Don't miss the chance to view this charming residence.



Area Map



Floor Plans

Ground Floor

Floor 1

Approximate total area⁽¹⁾
562 ft²
52.2 m²

Reduced headroom
7 ft²
0.6 m²

(1) Excluding balconies and terraces

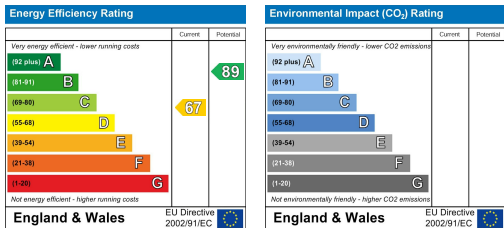
Reduced headroom
..... Below 5 ft/1.5 m

While every attempt has been made to ensure accuracy, all measurements are approximate, not to scale. This floor plan is for illustrative purposes only.

Calculations are based on RICS IPMS 3C standard.

GIRAFFE 360

Energy Efficiency Graph



These particulars, whilst believed to be accurate are set out as a general outline only for guidance and do not constitute any part of an offer or contract. Intending purchasers should not rely on them as statements of representation of fact, but must satisfy themselves by inspection or otherwise as to their accuracy. No person in this firm's employment has the authority to make or give any representation or warranty in respect of the property.